

**SIXTY-THIRD SESSION OF THE  
COUNCIL OF THE INTERNATIONAL BUREAU OF EDUCATION**

Geneva, 5-7 February 2014

**ORAL PROGRESS REPORT ON THE IMPLEMENTATION OF THE STRATEGY  
AIMED AT MAKING THE IBE A CENTRE OF EXCELLENCE IN CURRICULUM**



## IMPLEMENTATION PROGRESS OF THE STRATEGY AIMED AT MAKING THE IBE A CENTRE OF EXCELLENCE IN CURRICULUM

### GOAL A

Develop programmes and services that are relevant and responsive to the needs of Member States, innovative and effective in nature and, above all, of high quality

A1.4 A1.5 A1.6 A1.7



#### Strategy A1

**The IBE should clearly define its priorities:** what it must do, what it should do given additional resources and what it should “refer” to other institutions. (**comparative advantage**)

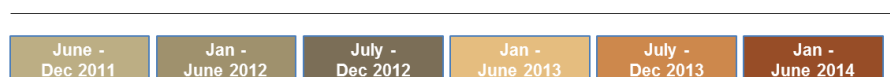
- Revision of vision, mission and objectives, programmes and programme priorities and working plans (emphasis on alignment)
- **IBE Strategy and Programme of Work 2012-2017**
- Reinforced planning, monitoring and evaluation approach

A1  
A2  
A3  
A4

### GOAL A

Develop programmes and services that are relevant and responsive to the needs of Member States, innovative and effective in nature and, above all, of high quality

A2.1 A2.2 A2.3 A2.4



#### Strategy A2

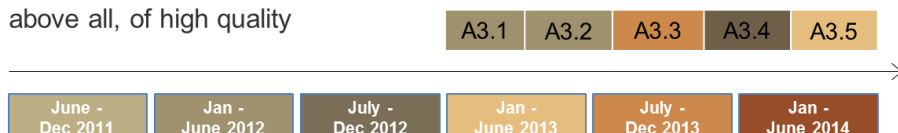
**The IBE should improve and diversify evidence-based mechanisms for the assessment of global, regional and national needs and priorities** in regard to curriculum-related services.

- Develop a methodology to systematically and regularly assess trends in global, regional and national needs and priorities. Survey developed and piloted **in Nigeria**.
- Needs assessed for Africa CEAC & CEMAC
- **International Experts’ meeting** to assess regional needs and trends
- Future regional meetings
- Comparative situational analysis (**Global Curriculum Report**)

A1  
A2  
A3  
A4

## GOAL A

Develop programmes and services that are relevant and responsive to the needs of Member States, innovative and effective in nature and, above all, of high quality



### Strategy A3

The IBE should further develop a **results-based focus** for its work, looking beyond inputs and immediate outputs to **longer-term outcomes and impact**.

- Developed **planning documents and report for programmes** (objectives, outcomes, indicators), initiated impact evaluation design
- *IBE Strategy & Programme of Work 2012-2017* finalized, **published & initiated implementation**
- **Comprehensive evaluation of Diploma** (short, medium, long-term impact)

A1  
A2  
A3  
A4

## GOAL A

Develop programmes and services that are relevant and responsive to the needs of Member States, innovative and effective in nature and, above all, of high quality



### Strategy A4

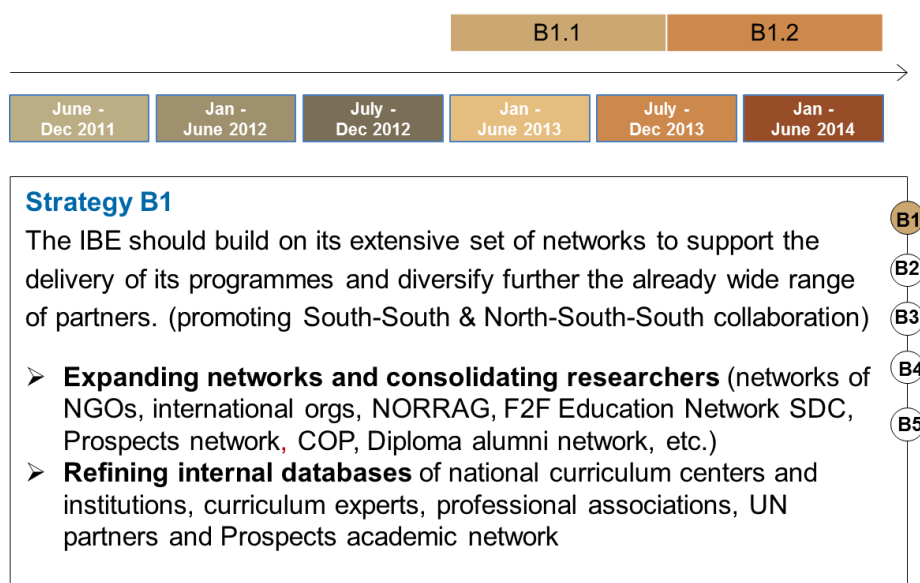
The IBE should both **make results from relevant research easily available to its partners** and **define** its own forward-looking, cross-national and **demand-driven research agenda**.

- Based on field work and consultations with partners, **research topics** compiled
- **New agreements** with academic partners (International Academy of Education; Geneva University–FAPSE; International School of Geneva, Sydney University)
- **The IBE Statement on Learning** based on the **International Experts' Meeting**
- Curriculum Collection and Glossary on Curriculum Terminology available online
- World Data on Education top downloaded content
- Contribution to the GMR on competencies
- Potential of the Global Curriculum Report

A1  
A2  
A3  
A4

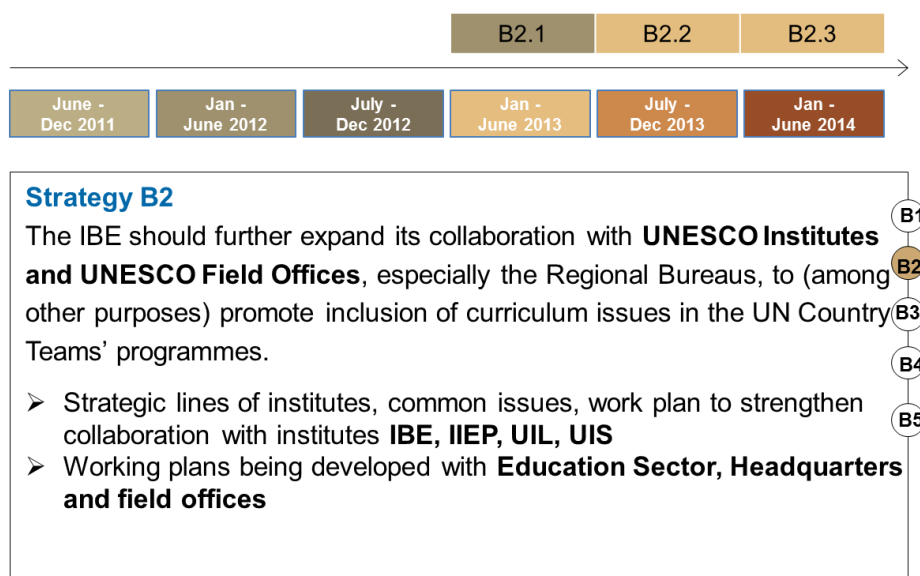
## GOAL B

Develop efficient mechanisms to implement programmes and deliver services appropriate to a CoE



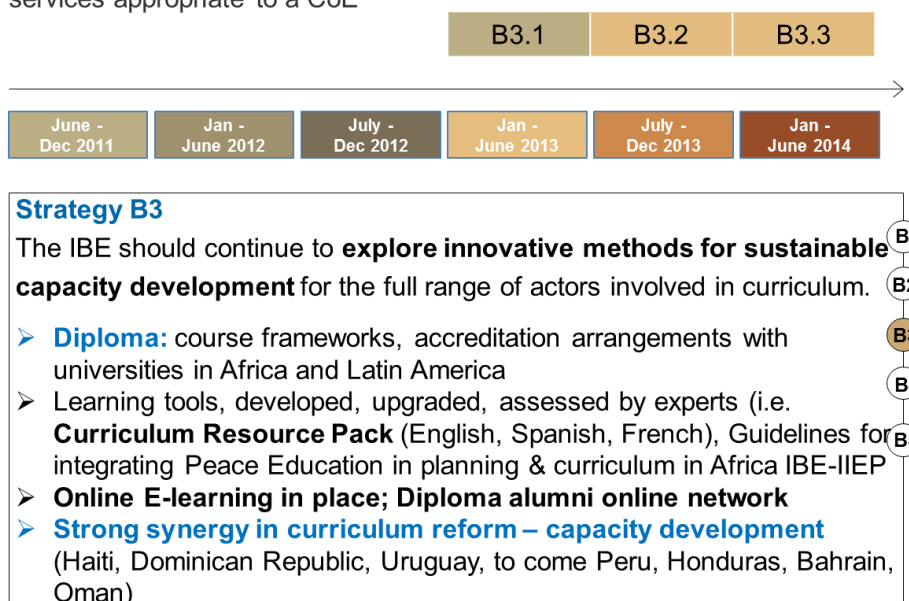
## GOAL B

Develop efficient mechanisms to implement programmes and deliver services appropriate to a CoE



## GOAL B

Develop efficient mechanisms to implement programmes and deliver services appropriate to a CoE



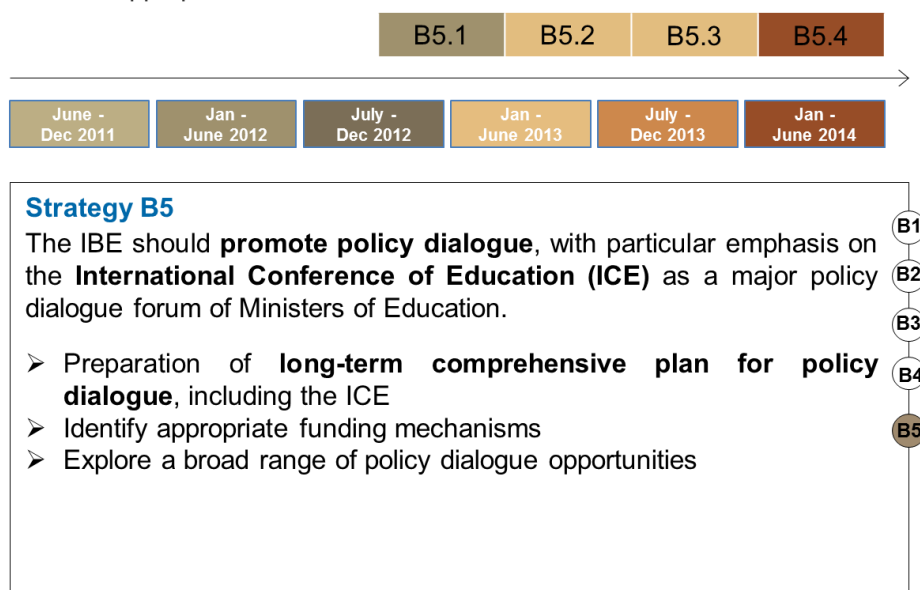
## GOAL B

Develop efficient mechanisms to implement programmes and deliver services appropriate to a CoE



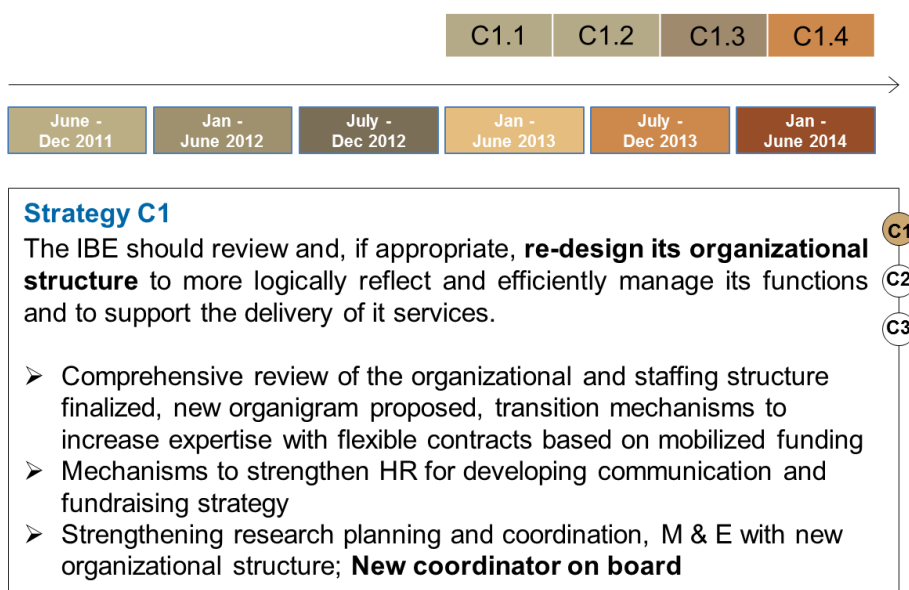
## GOAL B

Develop efficient mechanisms to implement programmes and deliver services appropriate to a CoE



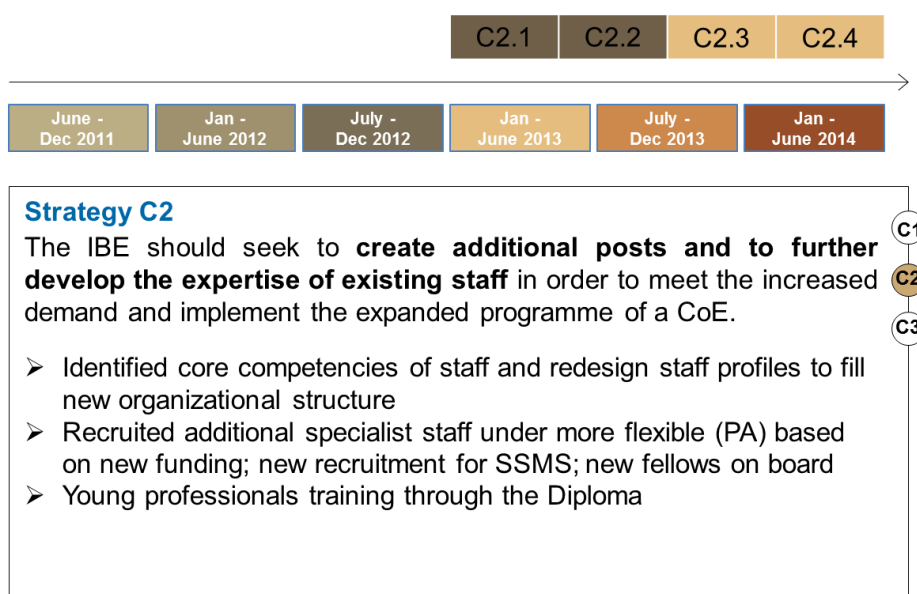
## GOAL C

Strengthen management and governance structures so that they are logical, efficient, effective and appropriate to a CoE



## GOAL C

Strengthen management and governance structures so that they are logical, efficient, effective and appropriate to a CoE



## GOAL C

Strengthen management and governance structures so that they are logical, efficient, effective and appropriate to a CoE

